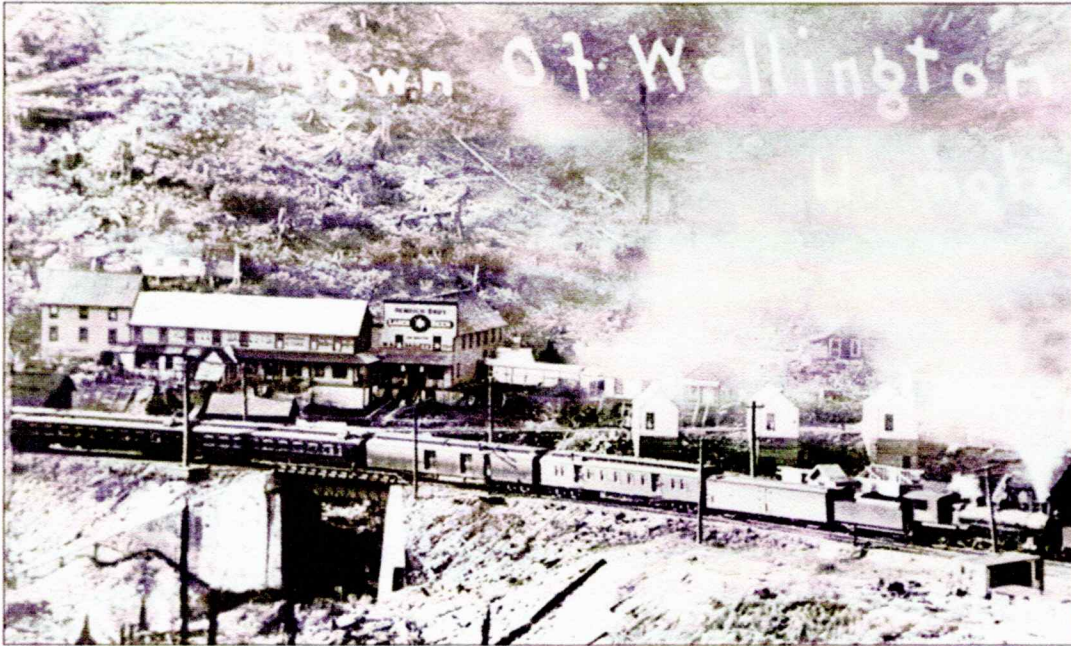


# 1910 TRAIN DISASTER AT WELLINGTON, WASHINGTON



In late February 1910 the small railroad town of Wellington, Washington experienced a severe blizzard lasting nine days, with snowfall reaching up to a foot per hour. Two Great Northern trains, the passenger train #25 and the fast mail train #27 became trapped at the depot due to the impassable conditions. Despite the presence of snowplows, the relentless snowfall and repeated avalanches rendered track-clearing efforts ineffective. On February 28, the weather shifted to rain and warmer temperatures accompanied by a thunderstorm. Shortly after 1 a.m. on March 1, a lightning strike triggered a massive avalanche from Windy Mountain, which swept down and engulfed the stranded trains, resulting in the tragic loss of 96 lives.

This exhibit is a collection of postcards and photos. 1. Great Northern Railroad history. 2. Postcards representing the area and the trains involved in the disaster. 3. Postcards of the Leavenworth depot and rail yards. 4. Postcards showing the destruction and the aftermath.