

LOVELY AS A TREE

A Celebration of Trees Using Stamps and Covers

Trees are a source of beauty and resources. This exhibit celebrates the beauty, utility, diversity, and abundance of trees. The author first became fascinated with depictions of trees on stamps with the United States issue of American Trees in 1978. This exhibit presents stamps showing trees from around the world and a variety of plant families. For the most part, only stamps showing the entire tree (trunk, branches, leaves, and sometimes fruit, nuts, or seed pods) are included. The exhibit includes two parts:

Part 1 – SCIENCE and ORGANIZATION

Briefly describes the hierarchical organization of the Plant Kingdom. There are twelve major groups (Phyla) of living plants, but only five phyla include plants that grow in the form of trees. An explanation of the system for providing living things with a unique scientific name is included. Finally, a definition and description of what constitutes a tree is presented.

Part 2 – TAXONOMIC ORDERING: DIVERSITY, ABUNDANCE, and DELIGHT

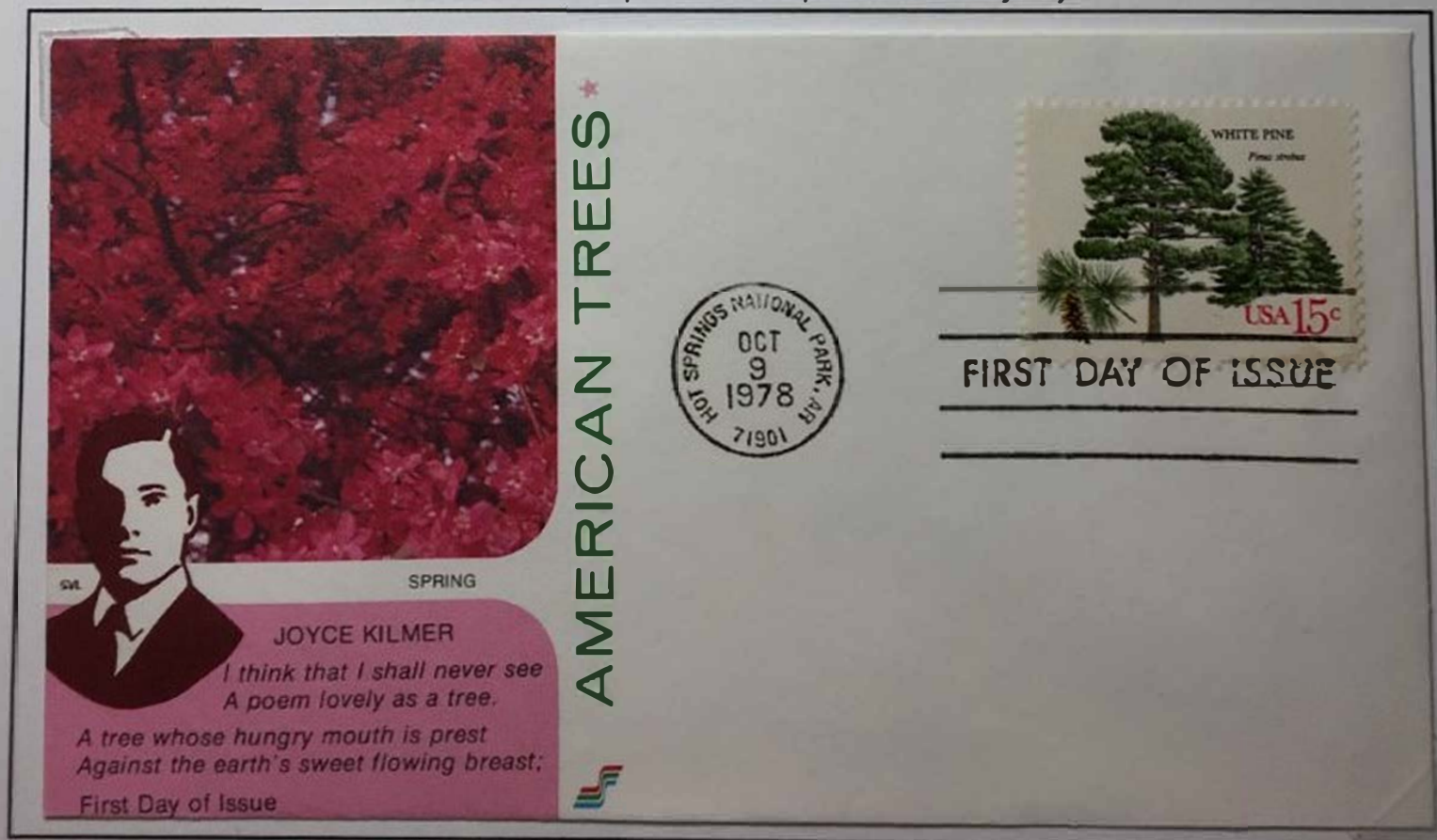
Uses scientific hierarchical ordering, also known as taxonomic ordering, to present examples of trees from five plant phyla and more than 75 different plant families. For the Phylum Anthophyta (flowering plants), additional information about modern classification using DNA is presented.

Notes:

Text boxes provide additional historical or philatelic information about stamps or stamp subjects.

A green double-outline around an item is used to identify stamps or covers of special note.

A First Day Cover (FDC) that celebrates the beauty of trees.
The FDC cachet includes a portion of the poem "Trees" by Joyce Kilmer.



American Trees Issue of 1978 – White Pine (*Pinus strobus*).